

国立研究開発法人

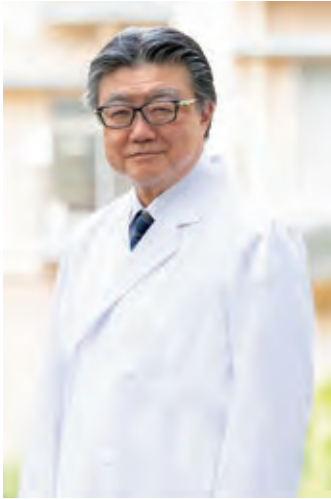
国立精神・神経医療研究センター

National Center of Neurology and Psychiatry

ENGLISH

Greetings from the President

Our institutions and hospital work together to conquer disease through the outstanding research of world-class specialists and patient-oriented care amid a setting of natural beauty.



President
Kazuyuki Nakagome

National Center of Neurology and Psychiatry

Work on cutting-edge medical care for the brain, mind and body



To overcome mental, neurological, muscle diseases, and developmental disorders

One of the missions of the National Center of Neurology and Psychiatry (NCNP) is to bring together hospital and research institutes to carry out research and development aimed at overcoming mental, neurological and muscle diseases, and developmental disorders. In addition to hospital and research institutes, NCNP has four centers (Translational Medical Center, Medical Genome Center, Integrative Brain Imaging Center, Cognitive Behavioral Therapy Center), which bridge between hospital and research institutes in implementing clinical research and not only are engaged in research in the field of genomic medicine, neuroimaging and cognitive behavioral therapy, but also support other facilities' research as a research base. In addition, we have established specialized disease centers covering 12 areas such as multiple sclerosis, muscle disease, epilepsy, Parkinson's disease, sleep disorders, schizophrenia, mood disorders, dementia, dysphagia, drug addiction, neuromodulation, COVID-19 post-affective symptoms to conduct research and development, and provide advanced pioneering medical care by utilizing the research results.

Provision of advanced pioneering medical care and dissemination nationwide

At NCNP, we are working on medical care for patients that are difficult for other medical institutions to treat. For example, patients with intractable neurological diseases and rare diseases gather from all over the country, and NCNP provides highly specialized medical care to support diagnosis and treatment. We also offer a variety of advanced neuromodulation therapies for refractory mental illnesses, movement disorders, and epilepsy. We provide a wide range of cognitive behavioral therapies to patients with psychiatric and neurological disorders associated with anxiety and depression, and through the training process, promotes cognitive behavioral therapy nationwide.

The rapid increase in mental and neurological disorders such as developmental disorders, depression, and dementia in modern society is a national issue, and the global disease burden of many mental and neurological disorders are ranked high in DALY (disability-adjusted life years), which suggests overcoming these disorders is an urgent issue in the world.

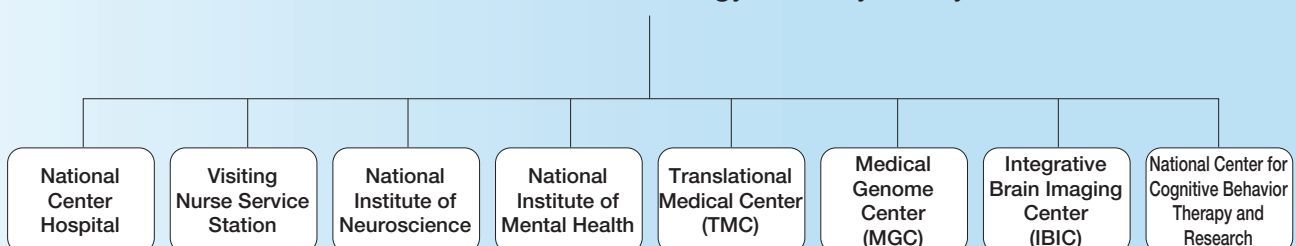
As the one and only facility in the world

At NCNP, which is the only facility in the world that is highly specialized in mental and neurological illnesses, and also has clinicians and researchers working together at the same site. All the staff collaborates together to overcome these disorders and also to reduce the public's health and life damage through prevention and early intervention and hopefully contribute to the mental and physical health promotion of many people.

Center Organization



National Center of Neurology and Psychiatry



Introducing the National Center of Neurology and Psychiatry (NCNP)

An advanced medical research center that combines medical care and research to overcome mental, neurological and muscular, and developmental disorders



Mission

- Research and Development**

As an advanced medical research center, NCNP plays a pivotal role in promoting clinical research on mental and neurological diseases by starting from basic research, through to clinical studies and trials. We also aim to consistently produce world-class research achievements by developing common research infrastructures with many external institutes and demonstrating unparalleled leadership in the effective use of research resources.
- Provision of Medical Care**

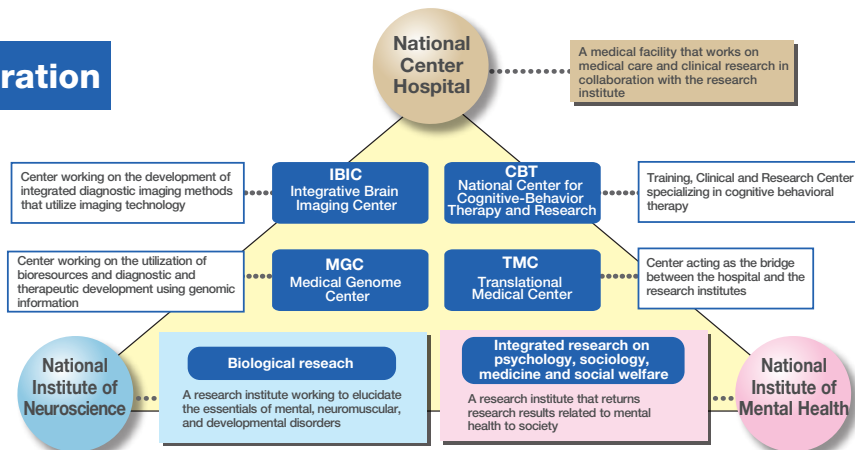
By making full use of the research achievements on psychiatric disorders and neurological diseases, NCNP delivers medical care that aims to improve the patient's quality of life. Particularly regarding rare, severe and intractable diseases, we provide advanced and pioneering treatments by consolidating a large number of cases and clinical information. We also support families and caretakers of patients with full consideration of the physical, psychological and economic burdens associated with these specific diseases.
- Human Resource Development**

NCNP cultivates leaders with expertise through extensive education and tutoring of residents and research fellows, and also promotes exemplary training and workshops for professionals in healthcare and related fields. We cultivate future leaders in local healthcare and leading-edge clinical studies. In addition, NCNP will also proceed with the development of programs for professionals other than doctors and researchers.
- Information Dissemination**

NCNP adequately disseminates information such as basic knowledge about psychiatric disorders and neurological diseases as well as information on their prevention, diagnosis and treatment, through various media and related institutions. In the event of an emergency situation, such as a natural disaster, NCNP promptly provides practical information based on its reliable accumulated research findings.
- Policy Recommendations**

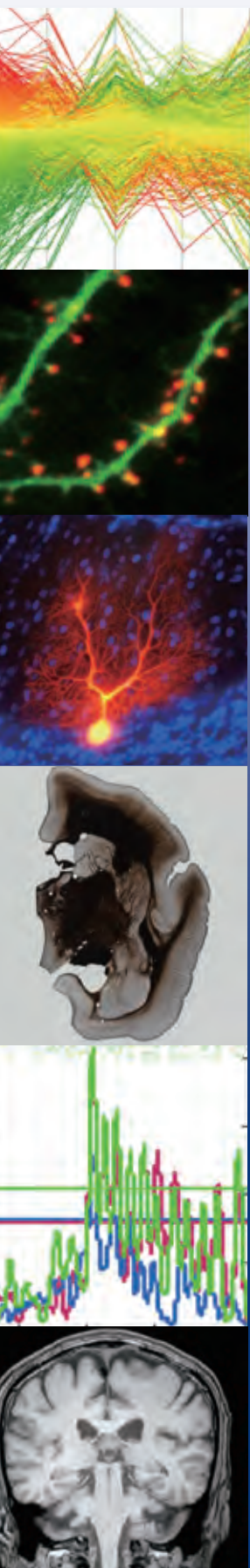
NCNP contributes to public policy planning related to psychiatric disorders and neurological diseases through the analyses of previous research, epidemiological studies, clinical studies, etc. We also provide expert policy advocacy on issues that directly affect the lives of patients and others, such as community health policy and disability welfare policy, based on the results of domestic and international research and fact-finding surveys.

Facility Cooperation



National Institute of Neuroscience

Discovering the fundamental causes of mental disorders, neurological and muscular diseases, and Developmental (neurodevelopmental) disorders and developing key breakthroughs in diagnosis, treatment and prevention



The World's Leading Neuroscience Research Institute

As a research institute of an advanced specialized medical center, the National Institute of Neuroscience of the National Center of Neurology and Psychiatry conducts biological studies into the diagnosis, treatment and prevention of various mental disorders, neurological and muscular diseases, and Developmental (neurodevelopmental) disorders for which the causes and treatments are not yet known. We have adopted molecular cell biology as a primary approach and are proactively applying physiology and brain imaging. We particularly focus on basic research that generates promising topics for clinical studies.

Internationally Unparalleled Animal Research Facilities

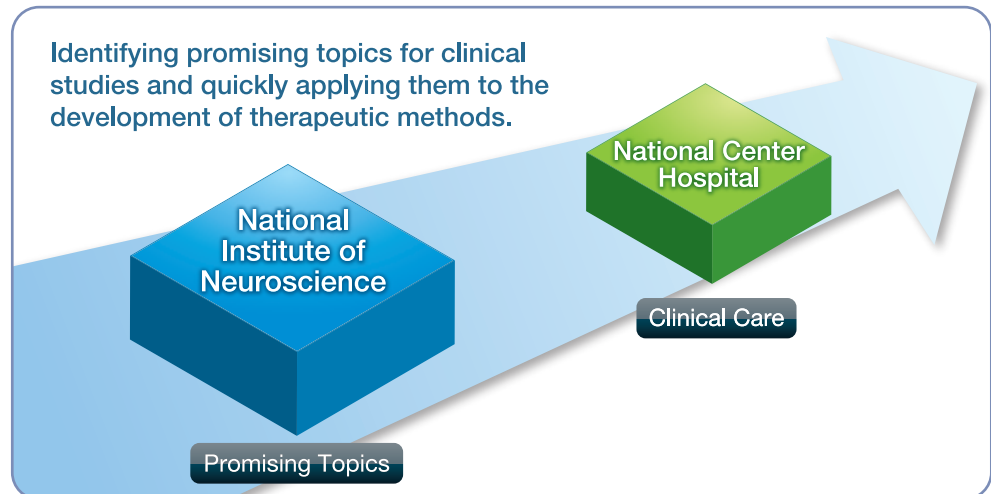
In the spacious premises of the center, we maintain two animal research facilities, the Research Facility for Experimental Animals and the Animal Facility for Translational Research. The Research Facility for Experimental Animals houses a medium-size animal research facility, a primate facility and a small-size animal facility, and the Animal Facility for Translational Research is for rodent research. With these four animal research facilities, we are able to conduct research using dogs with muscular dystrophy that are indispensable for studying this disease as well as mice and rats. We can also conduct studies on primates, such as marmosets, which have higher brain functions than mice and rats, a requirement for studying human mental disorders and neurological diseases. These facilities are among the largest of their kind in the world.

Open and International Research Environment Attracts Diverse Researchers

The National Institute of Neuroscience has successfully attracted outstanding talent through its system for accepting, by a variety of means, diverse researchers from Japan and abroad in addition to full time researchers. We also accept young, enthusiastic graduate students and conduct innovative studies using advanced equipment and methods through a joint graduate school program with a number of universities, including Institute of Science Tokyo, Tokyo University of Agriculture and Technology, Tokyo University, Waseda University, Shinshu University, and Meiji Pharmaceutical University. In this open environment, researchers in diverse fields are gathering and producing valuable findings through cooperative projects. We engage researchers from the United States, Europe, and other Asian nations. Furthermore, we actively conduct joint research projects with overseas institutions including Harvard University and the Max Planck Institute.



Identifying promising topics for clinical studies and quickly applying them to the development of therapeutic methods.



Six Disease Research Departments

Department of Neuromuscular Research	Elucidates pathomechanism of and develops therapy of muscle diseases
Department of Translational Neurobiology	Pioneers the integration of cutting-edge neurobiology with clinical innovations to combat neurological and Developmental (neurodevelopmental) disorders
Department of Mental Disorder Research	Advances brain science in the areas of psychiatric disorders
Department of Degenerative Neurological Diseases	Develops essential therapies for neurological diseases such as Alzheimer disease and amyotrophic lateral sclerosis
Department of Peripheral Nervous System Research	Analyzes mechanism of neuronal degeneration and regeneration to develop neuroprotective therapy
Department of Information Medicine	Explores brain pathophysiology and develops information therapy using integrated neuroimaging techniques

Six Basic Research Departments

Department of Biochemistry and Cellular Biology	Investigates molecular machinery of highly complicated and sophisticated nervous system development
Department of Ultrastructural Research	Investigates neural circuits and their development, and how higher brain function develops from neural circuits
Department of Molecular Therapy	Develops therapeutic approaches for neuromuscular diseases focusing on gene therapy and stem cell therapy
Department of Immunology	Develops treatment methods for brain autoimmune diseases (especially multiple sclerosis)
Department of Molecular Pharmacology	Identifies the systemic regulation mechanism of neuronal homeostasis
Department of Neurophysiology	Explores neural basis of sensory-motor mechanism underlying animal behavior

Research Support Units

Administrative section of Animals Resources

Administrative section of Radiation Protection

Administrative section of Primate Management

National Institute of Mental Health

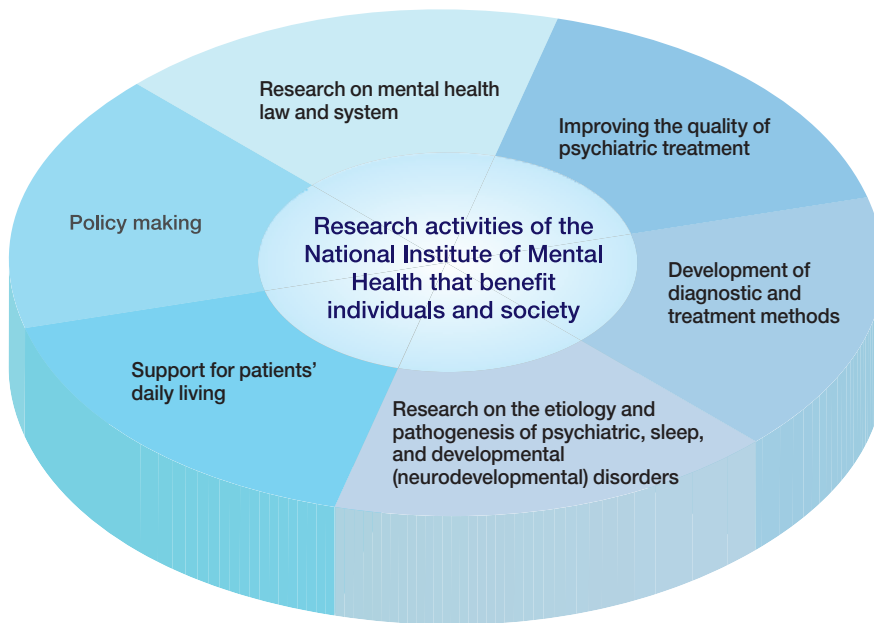
Supporting people with psychiatric disorders, developmental (neurodevelopmental) disorders, sleep disorders, and mental health challenges through policy recommendations, healthcare, and welfare informed by clinical and basic research on public mental health



The National Institute of Mental Health conducts world-class research to clarify the etiology and pathogenesis of mental illnesses and developmental (neurodevelopmental) disorders, and to develop objective diagnostic methods and better methods of treatment and support.

Furthermore, to improve the quality of mental health care, we collaborate with the NCNP Hospital, medical institutions nationwide, and government agencies to promote the broader dissemination of advanced and pioneering diagnostic and treatment methods.

To share our research findings with health care and welfare professionals and the general public, we actively provide professional training, public lectures, and policy recommendations.



Training session



Multidisciplinary outreach team

Mission of the National Institute of Mental Health

Support for patients' daily living

1. Research on mental health policy (policy recommendations for national and local governments)
2. Basic neuroscience research (etiology and pathophysiology of mental illnesses and developmental (neurodevelopmental) disorders)
3. Translational research (diagnosis, treatment, rehabilitation, and daily life support)
4. Research on legal systems (including mechanisms for supporting individuals and families and protecting rights)
5. Mental health support in extremely stressful situations
6. Development of highly specialized professionals in psychiatric care and mental health



Promoting research



Applying Research Achievements to Contribute to Policy Making

Department of Public Mental Health Research	Contribute to Japanese national mental health policy planning through close monitoring and analysis of domestic official data in the field of mental health and welfare
Department of Drug Dependence Research	Contribute to resolving drug dependence-related issues by conducting epidemiological research on the drug abuse/dependence and pharmacological mechanism of dependence-producing drugs
Department of Community Mental Health and Law	Contribute to building improved mental health and welfare systems through developing effective services and systems to support community living for people with mental disorders and conducting empirical research
Department of Sleep-Wake Disorders	Contribute to establishing policy and promotion/awareness guidelines to advance the health of the national population

Applying Research Achievements to Clinical Care

Department of Behavioral Medicine	Research on the etiology and pathophysiology of stress- and trauma-related disorders, including PTSD, depression and eating disorders, and the development of therapeutic strategies
Department of Preventive Intervention for Psychiatric Disorders	(1) Research into early detection and intervention on psychiatric disorders and the development of preventive therapeutics (2) Elucidation of etiology, mechanisms, and treatment of psychiatric conditions common in childhood and adolescence
Department of Neuropsychopharmacology	Elucidation of mechanisms of action, promotion of appropriate use, and new development of drugs for neuropsychiatric disorders through collaboration among psychiatry, neuroscience, pharmacology, and genomics.
Department of Pathology of Mental Diseases	Elucidation of pathology and development of diagnosis and treatment in schizophrenia, mood disorders, and developmental disorders. Dissemination, education and verification of treatment guidelines in psychiatry
Department of Sleep-Wake Disorders	Elucidate the pathophysiology of circadian and sleep-wake disorders, its influence on mental and physical condition, and develop the new strategies for diagnosis and treatment
Department of Developmental Disorders	Elucidate the pathophysiology of developmental (neurodevelopmental) disorders including intellectual disability, autism spectrum disorder, ADHD and specific learning disorder, and explore the effective methods of diagnosis and new treatments

Information Dissemination and Human Resource Development

National Information Center of Stress and Disaster Mental Health	Research on the mental health impact of disaster and severe criminality, the development of effective countermeasures and guidelines, dissemination of appropriate information, collaboration with relevant national and international agencies and organizations
--	---

Training and Education

- Multi-day courses are offered annually to develop specialized expertise.
- About 2,300 people participate in these courses each year.

Psychological First Aid and Psychosocial Support in Disasters	Workshop on Treatment and Care of Drug Dependence for Medical Professionals
Workshop on Group Relapse Prevention Program for Drug Dependence	Workshop on Treating Eating Disorders: Outpatient, Inpatient, and Pediatric Courses
Workshop on Support for Individuals with Developmental (Neurodevelopmental) Disorders	Advanced Training in Eating Disorders
Workshop on Emergency Psychiatric Care Systems	Workshop on Standard Therapy of Schizophrenia
Workshop on Standard Therapy of Major Depressive Disorder	Workshop on Treatment and Support of PTSD
Workshop on Mental Health and Medical Welfare Data Utilization for Public Administration	Workshop on Inpatient Visitation Support Service

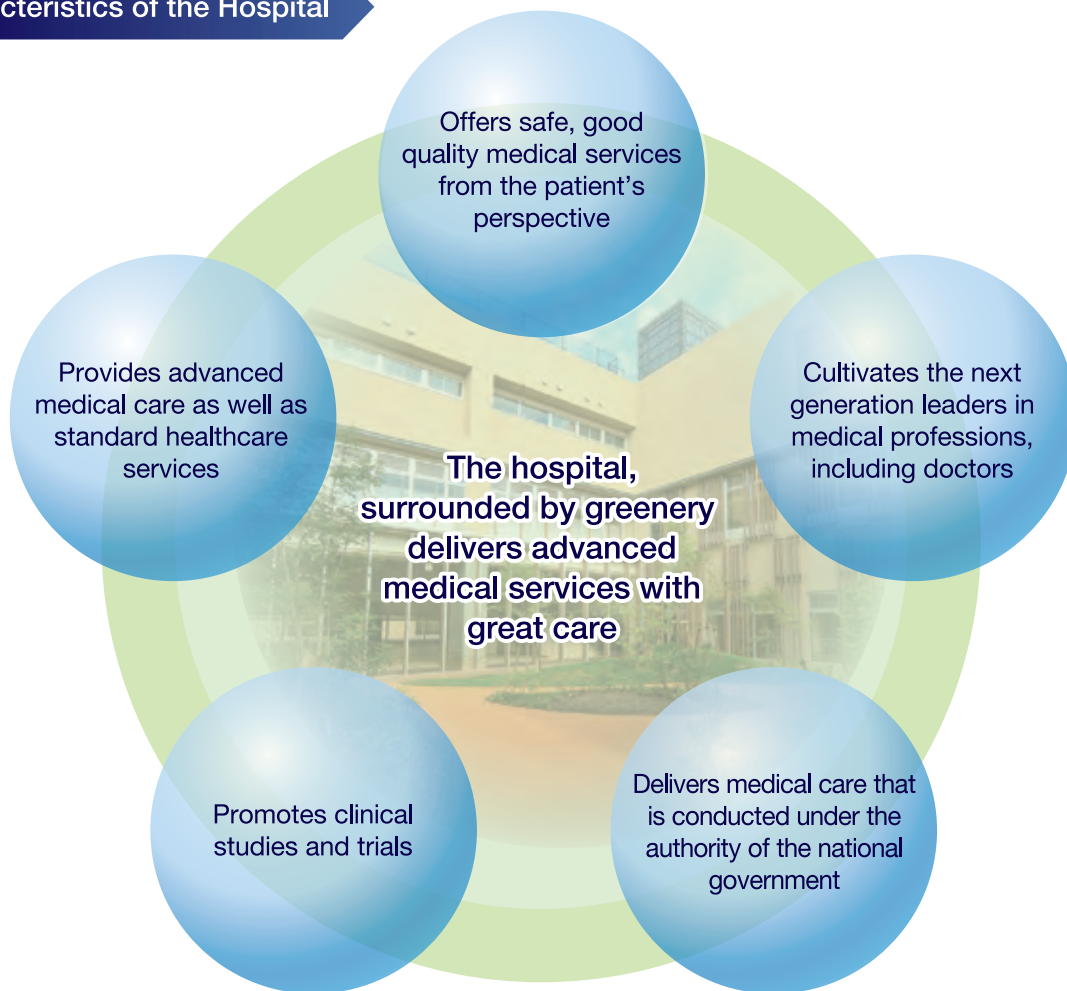
National Center Hospital

A leading-edge hospital that conducts medical practice and research in concert with the research institutes to overcome mental disorders, neurological and muscular diseases, and developmental (Neurodevelopmental) disorders



The mission of the National Center Hospital is to lead Japan's research and medical care for brain, neurological and muscular diseases, many of which are intractable, toward clarifying their causes and developing diagnostic and treatment methods. A lot of people experience a deteriorating quality of life as these diseases interfere with their work and everyday activities. We sincerely strive to make highly qualified medical technologies available to patients with mental disorders, neurological and muscular diseases and developmental (neurodevelopmental) disorders, while respecting the human rights of our patients.

Characteristics of the Hospital



Hospital rooftop garden



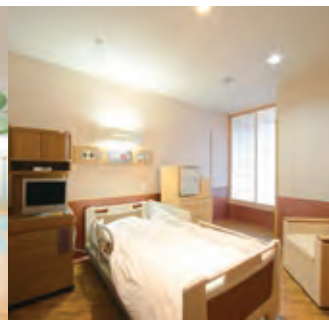
Operating room



Pediatric out-patient clinic



Special private room



Nursing station



Departments

Department of Medical Safety Management	Clinical Safety Unit
	Infection Prevention and Control Unit
	Innovative Therapies Development Unit
Department of Psychiatry	
Department of Child Psychiatry	
Department of Forensic Psychiatry	
Department of Clinical Psychology	Division of Clinical Psychology
Department of Neurology	
Department of Child Neurology	Therapeutic Education Unit
Department of Neurosurgery	
Department of General Internal Medicine	Nutrition Management Unit
Department of Cardiology	
Department of General Surgery	
Department of Orthopedics	
Department of Dentistry	
Department of Outpatient	
Department of Genomic Medicine	Genetic Counseling Unit
Department of Epileptology	
Department of Central Sterile Supply	Division of Medical Engineering
Department of Anesthesiology	
Department of Radiology	
Department of Clinical Laboratory	Sleep Disorder Laboratory
Department of Physical Rehabilitation	Genetic Diagnosis
Department of Psychiatric Rehabilitation	
Department of Medical and Welfare Consultation	International Medical Consultation Unit
Department of Pharmacy	Community Medical and Welfare Social Work Office
Nursing Department	Division of Advanced Practice Nursing
Department of Educational Promotion	Division of Clinical Research Education and Training
	Division of Education and Training
Department of Clinical Research Support	Division of Clinical Research and Clinical Trials Promotion
	Division of Clinical Research Support
	Division of Bioethics
Department of Clinical Data Science	Division of Monitoring
	Division of Data Management
	Division of Biostatistical Analysis
	Division of Clinical Research Planning and Analysis

Specialty Outpatient Clinic

Psychiatry	Schizophrenia Mood Disorder Sleep Disorder (adults) Electro-Convulsive Therapy (ECT), Repetitive Transcranial Magnetic Stimulation (rTMS) Cognitive Behavioral Therapy Drug Dependence
Child Psychiatry	Neurodevelopmental Disorders School Refusal
Child Neurology	Epilepsy (pediatric) Muscular Disease (pediatric) Sleep Disorder (pediatric) Specific Learning Disorders
Neurology	Parkinson's Disease Muscular Disease (adults) Multiple Sclerosis Amyotrophic Lateral Sclerosis (ALS) Botulinum Toxin Therapy
Neurosurgery	Epilepsy Surgery (children and adults) Deep Brain Stimulation (DBS) Hydrocephalus Adult Electroencephalogram (EEG)
Epileptology	Epilepsy (adults)
General Internal Medicine	Post COVID-19 Condition Electromyogram (EMG)

Outpatient Rehabilitation

- Psychiatric Day Care, Occupational therapy
- Return to Work Day Care

Uninsured (self-pay) medical services

- Second Opinion
- Genetic Counseling
- Brain Checkup
- Born Health Checkup

Specialized Disease Centers

Multiple Sclerosis Center	Muscular Disease Center
Comprehensive Epilepsy Center	Parkinson's Disease and Movement Disorder Center
Sleep Disorders Center	Early Detection and Intervention Center for Schizophrenia (EDICS)
Mood Disorder Center	Research Center for Neurocognitive Disorders
Dysphagia Research Center	Center for Drug Addiction Treatment

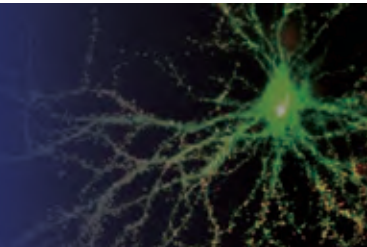
National Center Hospital

National Center Hospital is focusing on clinical research as well as educational activities. We provide support for clinical research and investigator-initiated clinical trials to ensure safe and smooth clinical research, as well as education and training programs related to medical care and clinical research, both inside and outside NCNP.

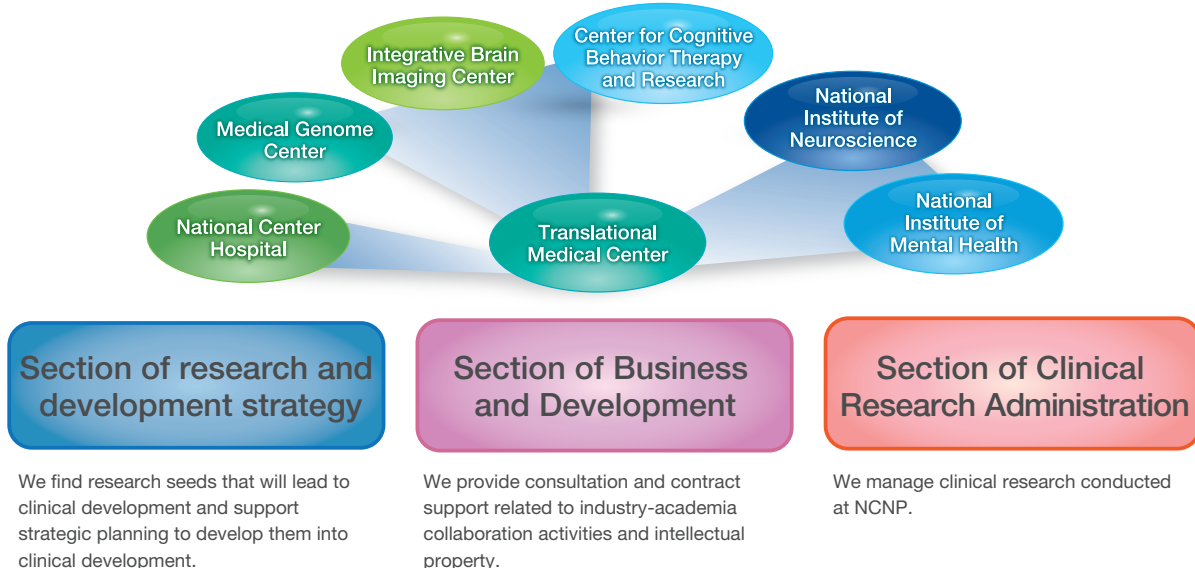


Translational Medical Center(TMC)

In collaboration with CREP, TMC bridges medical care and basic research, promotes industry-academia collaboration activities, and supervises clinical research

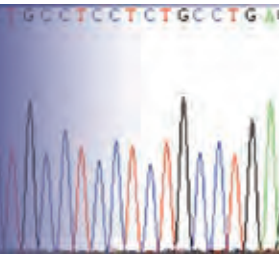


We are responsible for promoting clinical development and social implementation through the discovery and development of research seeds and support for industry-academia collaboration activities. We also manage clinical research conducted at NCNP.



Medical Genome Center (MGC)

Developing new diagnostic and therapeutic methods with genomic information toward clinical applications and promoting the effective use of bioresources for mental disorders, neurological and muscular diseases and developmental disorders.



The MGC preserves genomic and genetic information and bioresources through linkage with clinical information. It utilizes these value-added resources to develop new diagnostic, therapeutic, and prevention methods as well as clinical applications in collaboration with hospitals, research institutions, the IBIC, and the TMC.

Organizational Structure

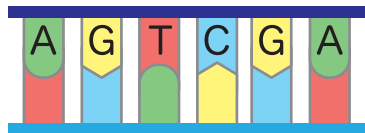
Department of Genome Medicine Development

Section of Clinical Genome Analysis

Section of Integrative Genome Diagnosis

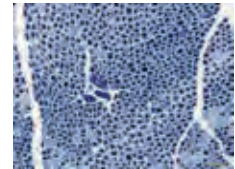
Development of Translational Medicine Using Genome Analysis

- Acquisition and analysis of genomic information
- Management of data including links to clinical information
- Verification of the clinical efficacy of genomic information
- Compliance with ethical guidelines for genomic and genetic research



Support for Practical Application of Genomic Medicine

- Development and application of genomic and genetic diagnosis
- Development and application of integrated genomic diagnosis that incorporates pathological and other assessments
- Utilization of information from omics data other than genomics
- Development of human resources



Department of Biobanking

Section of Bioresource Management

Section of Bioresource Utilization Promotion

Management and Utilization of Bioresources

NCNP Biobank



National Center Biobank Network



Biobanking RBB00030

Three Key Strengths

- ✓ **Quality Management System:** ISO 20387-accredited (first in Japan)
- ✓ **Focus on Brain Disorders:** Including over 7,200 cerebrospinal fluid samples, also from healthy individuals
- ✓ **Extensive Utilization:** More than 360 projects across industry, government, and academia, including international use

NCNP Biobank provides high-quality samples and data to researchers, driving innovation in mental and neurological disorder research.

Sample Search Available: Access inventory via NCBN Catalog DB



Center for Molecular Diagnostics

Molecular Analysis Unit

Quality Management Unit

Diagnostic Support through Molecular Testing

- Provision of genetic testing under the national health insurance system
- Operation as a registered clinical laboratory in compliance with Japanese laws and regulations
- Integrated utilization of biospecimens and data in collaboration with the biobank

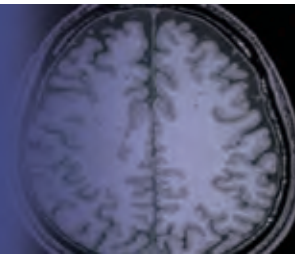


Integrating research infrastructure with clinical diagnostics to advance next-generation molecular diagnostics

Registered in June 2025. Currently focused on in-house testing, with plans to expand services nationwide.

Integrative Brain Imaging Center

Toward understanding brain pathophysiology by means of integrative neuroimaging that takes advantage of various imaging technologies

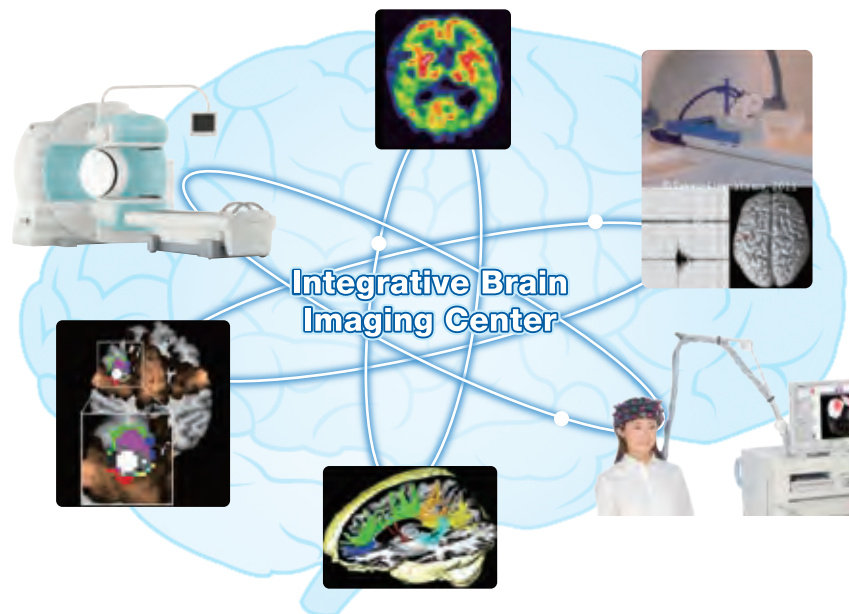


The Integrative Brain Imaging Center conducts integrative imaging studies of mental disorders, neurological and muscular diseases, and developmental disorders in close cooperation with the two research institutes and the hospital in NCNP. The Integrative Brain Imaging Center will take the lead in clinical imaging studies as a central facility for multi-institutional neuroimaging research projects in Japan.

Organization Overview	
Department of Advanced Neuroimaging	Department of Clinical Neuroimaging
<ul style="list-style-type: none">• Multimodal Neuroimaging Section• Animal Model Imaging Section• Organic Radiochemistry Section• Neurophysiology Section• Brain-Computer Interface Section	<ul style="list-style-type: none">• Diagnostic Neuroimage Research Section• Clinical Optic Imaging Section• Imaging Neuroinformatics Analysis Section• Neuroimaging Database Section

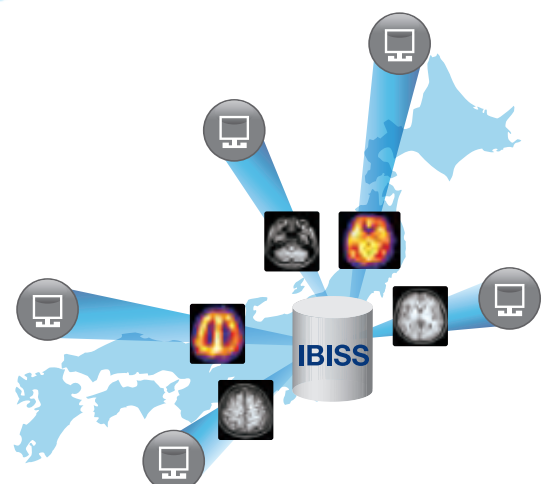
Conducting Integrative Neuroimaging Studies

Each imaging technology has its own unique advantages. The effective combination of multiple brain imaging techniques, such as magnetic resonance imaging (MRI), positron emission tomography (PET), magnetic encephalography (MEG) and near-infrared spectroscopy (NIRS), allows us to develop new diagnostic imaging technologies for exploring brain structures and functions, and to achieve major progress in understanding brain pathophysiology.



Creating a Image Network

We have created the Integrative Imaging Support System (IBISS) for multi-institutional neuroimaging research projects, which will lead to building a imaging database. IBISS will also function as a hub for a nationwide network for studying clinical imaging.



National Center for Cognitive Behavior Therapy and Research

Our mission is to train professionals, promote research, and provide cognitive behavior therapy, an effective alternative to pharmacotherapy for mental disorders



The National Center for Cognitive Behavior Therapy and Research is Japan's first training, research, and clinical support center specializing in cognitive behavior therapy (CBT). The center intends to enhance psychiatric technologies in Japan and build a society where patients can receive better psychiatric treatments. To that end, we implement the nation's leading-edge research and training on CBT.



About Cognitive Behavior Therapy

CBT aims to relieve symptoms and prevent recurrences such as depressive moods and physical responses caused by stress. CBT strengthens self-control by applying theories and behavior modification techniques of cognitive behavioral science.

Outline and History



The NCNP logo

The red circle represents the lives or spirit of patients, located between the letters "I" for "Institutes" and "H" for "Hospital", expressing our philosophy that the institutes and hospital work together to protect patients by overcoming mental disorders and neurological diseases. The blue used as the base color is often associated with peaceful state of mind and is also thought to have a restorative effect on mental balance and is also a color evoking peace and tranquility.

Outline

Name	National Center of Neurology and Psychiatry		
Establishment	April 1, 2010		
President	Kazuyuki Nakagome	Auditor-secretary (part time)	Sonoko Hishiyama
Director	Yoshinori Cho		Ryota Onuki
Directors (part time)	Michiko Nakazato Momoe Kuromatsu Tomomi Shimogori		
President			Kazuyuki Nakagome
Director of the National Center Hospital			Tatsushi Toda
Director of the National Institute of Neuroscience			Takeshi Iwatsubo
Director of the National Institute of Mental Health			Yoshinori Cho
Director of the Translational Medical Center			Hirofumi Komaki
Director of the Medical Genome Center			Naomichi Matsumoto
Director of the Integrative Brain Imaging Center			
Director of the Center for Cognitive Behavior Therapy and Research			Hironori Kuga

NCNP History

National Center Hospital	December 1940	Established as Musashi Sanatorium for the War Disabled
	December 1945	Transferred to the Ministry of Health and Welfare and inaugurated as National Musashi Sanatorium
	January 1978	Establishment of the research institute (Neurological Research Center of National Musashi Sanatorium)
	October 1986	Renamed as Musashi Hospital due to the establishment of National Center of Neurology and Psychiatry
National Institute of Neuroscience	January 1978	Established as Neurological Research Center of National Musashi Sanatorium
	October 1986	Renamed as National Institute of Neuroscience due to the establishment of National Center of Neurology and Psychiatry
National Institute of Mental Health	January 1952	Established as National Institute of Mental Health
	October 1986	Renamed as National Institute of Mental Health due to the establishment of National Center of Neurology and Psychiatry
National Center of Neurology and Psychiatry	October 1986	Merger of National Musashi Sanatorium, its Neurological Research Center and National Institute of Mental Health into National Center of Neurology and Psychiatry (NCNP)
	April 1987	Intergration of the National Kohnodai Hospital to NCNP
	March 2005	Moved National Institute of Mental Health to Kodaira district of Tokyo
	July 2005	Addition of the nation's first facility under the Act on Medical Care and Treatment for Persons Who Have Caused Serious Cases Under the Condition of Insanity
	April 2008	Merger of National Kohnodai Hospital with International Medical Center of Japan Renamed Musashi Hospital as National Center Hospital of Neurology and Psychiatry
	October 2008	Establishment of Translational Medical Center (TMC)
	April 2010	NCNP became an Incorporated Administrative Agency
		Establishment of Center's second facility (9 hospital wards) under the Act on Medical Care and Treatment for Persons Who Have Caused Serious Cases Under the Condition of Insanity
	September 2010	Completion of construction of new National Center Hospital building
	April 2011	Establishment of Integrative Brain Imaging Center
		Establishment of Center for Cognitive Behavior Therapy and Research
	December 2011	Opening of National Information Center for Disaster Mental Health
	July 2014	Completion of construction of new Library and Conference Center
April 2015	NCNP was chosen as a National Research and Development Agency	
	Establishment of Medical Genome Center	
May 2015	Establishment of Visiting Nurse Service Station	
April 2020	Establishment of Japan Health Research Promotion Bureau	



Main Institute Building



Institute Building III



General Animal Research Facility



国立研究開発法人 **国立精神・神経医療研究センター**
National Center of Neurology and Psychiatry (NCNP)

—— 基本理念 ——

病院と研究所が一体となり、精神疾患、神経疾患、筋疾患、及び発達障害の克服を目指した研究開発を行い、その成果をもとに高度先駆的医療を提供するとともに、全国への普及を図る。

—— Philosophy ——

Our hospital and institutions should work together in research and development to overcome mental disorders, neurological and muscular diseases, and developmental disorders with the mission to use our research results for providing advanced medical services and to spread our services across the country.



〒187-8551 東京都小平市小川東町 4-1-1 [事務部門・病院]
 〒187-8502 [神経研究所]、〒187-8553 [精神保健研究所]
 TEL: 042-341-2711 [代表]

〒187-8551 4-1-1 Ogawa-higashi-cho, Kodaira-shi, Tokyo(Administration Office, Hospital)
 〒187-8502 (National Institute of Neuroscience)
 〒187-8553 (National Institute of Mental Health)
 TEL: 042-341-2711
<https://www.ncnp.go.jp/>



交通アクセス / Access Map

- ◆西武新宿線拝島行または多摩湖行にて「萩山駅」(南口)下車、徒歩7分
- ◆JR中央線「国分寺駅」乗換え、西武多摩湖線にて「萩山駅」(南口)下車、徒歩7分
- ◆JR武蔵野線にて「新小平駅」下車、徒歩10分
- ◆無料シャトルバス「萩山駅」↔「病院前」↔「新小平駅」
- ◆Take the Seibu Shinjuku Line bound for "Hajjima" or "Tamako"
Get off at "Hagiayama" station (south exit)
7 minutes walk from the station.
- ◆Take JR Chuo Line bound for "Kokubunji" Station.
Get off at "Hagiayama" Station on the Seibu Tamako Line.
7 minutes walk from the station.
- ◆Take JR Musashino line and get off at "Shinkodaira" station.
10 minutes walk from the station.
- ◆Free shuttle bus
"Hagiayama" Station ↔ Hospital ↔ "Shin-Kodaira" Station

