

Department of Drug Dependence Research

The research on the drug abuse/dependence situation and their mechanisms and The development of treatment methods

Understanding the current situation of drug abuse/dependence through nationwide epidemiological researches

- Lifetime prevalence of any illicit drugs (>=15 years old): **2.5%** in 2013
 - Solvents 1.9% > Cannabis 1.1% > Methamphetamine 0.5%
- Lifetime prevalence of any illicit drugs (junior high): **0.8%** in 2012
 - Solvents 0.5% > Cannabis 0.2% > Methamphetamine 0.2%
- % drugs as main cause of out- and in-patients in 2012
 - Methamphetamine 42% > “Evasion” Drugs 16.3% > Hypnotics/Anti-anxiotics 15%
- % of HCV Ab positive among the Methamphetamine inpatients is **18%** in 2013.

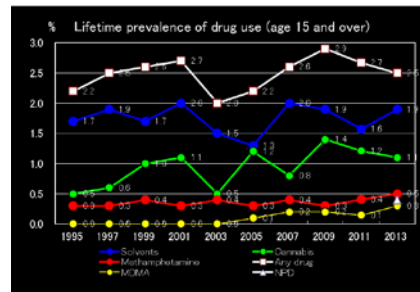
Development of treatment methods

- development of “family manual”
- development of “staff manual”



Development of Cognitive Behavioral Therapy

The workbook and manual-based CBT for drug dependence significantly raise the rate of treatment retention.



- Epidemiological researches for making strategies and their estimation
- Basic and clinical research on mechanism
- Development of treatment methods/system

Evaluation of the psychic dependency of newly abused drugs

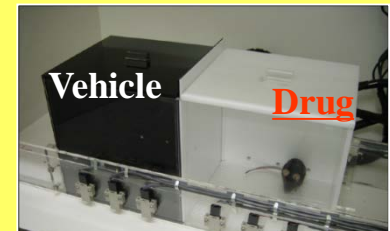
- **Basic Research (animal study)**
 - Neurobehavioral effects
 - Psychic dependency (CPP paradigm)
 - Neurotoxicity (cell culture)

Provide scientific data of drug for control in Japan

List of newly controlled drugs

(based on our data):

2C-T-2, 2C-T-4, 2C-T-7, 2C-I, Methylone, etc.



CPP paradigm: Which box is prefer?

Toxicity (brain neuronal cells)

