

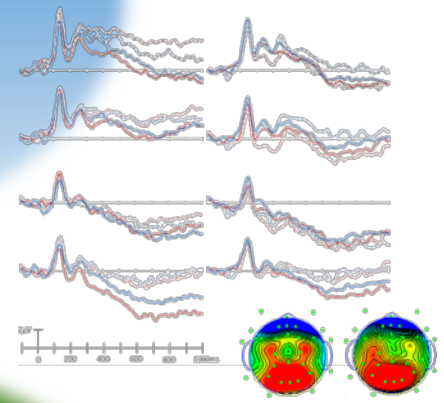
Department of Forensic Psychiatry



The department was established as the 11th department of the NIMH in Oct 2003 to monitor and ameliorate forensic mental health system and is the only public research facility in Japan which officially bears the name "forensic psychiatry". It aims to advance interdisciplinary research projects at the intersection between mental health and law. The research areas include risk assessment, risk management, cognitive behavioral therapy for forensic patients, criminal responsibility, expert testimony, epidemiology, crime victims, juvenile delinquency, criminal profiling, ethics and human rights, etc.

Forensic Assessment and Diagnostics Research

- Analog and clinical studies of psychopathy (psychopathic personality)
- Cognitive mechanism and neural basis of social norm compliance and violation
- Biological foundation for assessing criminal responsibility

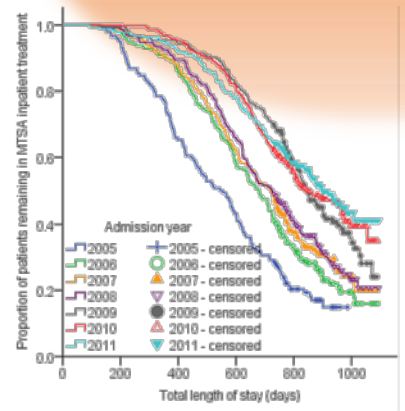


Forensic System Monitoring Research

- Medical Treatment and Supervision Act (MTSA) monitoring [since enforcement]

Inpatient visiting survey
(every hospital in cooperation)

Outpatient mailing survey
(504 out of 534 clinics in cooperation)



1,637 outpatients			
Problematic behaviors PRESENT 47%		Problematic behaviors ABSENT 53%	
15%	33%	17%	36%
Directly ordered outpatient treatment		Transferred from inpatient treatment	

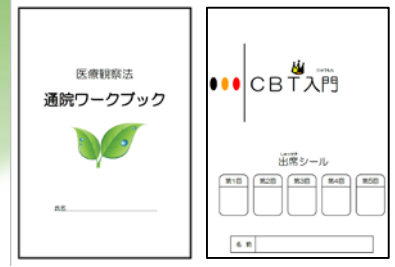
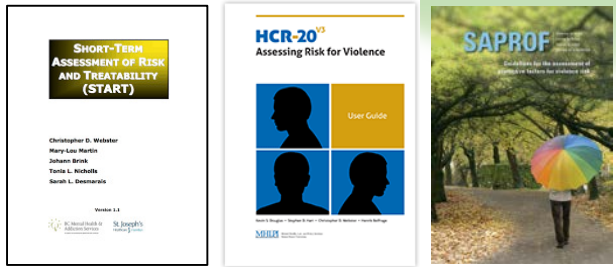
Forensic Treatment and Rehabilitation Research

- Psychological program development and evaluation for mentally disordered offenders

- Development of useful indices to monitor system operation

Japanese version of
START
HCR-20V3
SAPROF

- Risk assessment and management of mentally disordered offenders



- Mental health of workers in secure settings